



2022 Biennial Hooded Plover Population Count Report Appendix 1 – South Australian Maps

Southeast South Australia



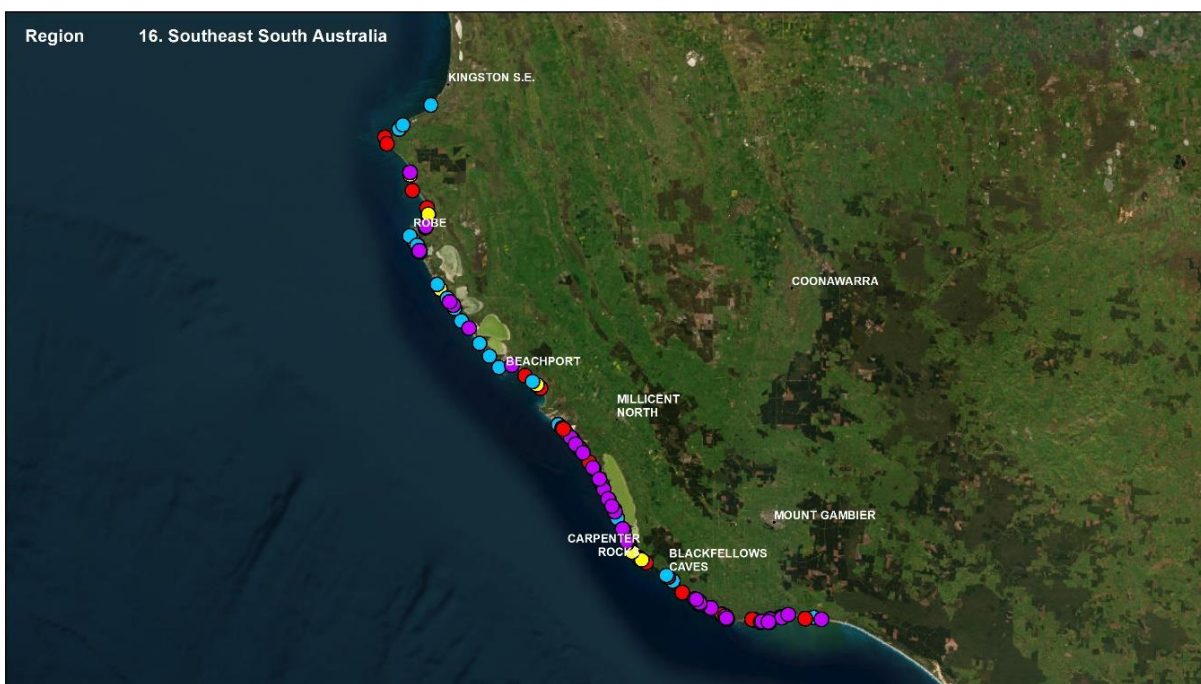
Hooded Plover Biennial Population Count 2022

Survey routes

- Surveyed
- Not surveyed



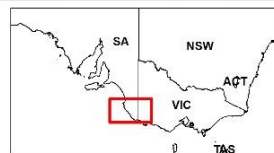
Service Layer Credits: Source: Esri, Maxar, Earthstar Geographics, and the GIS User Community



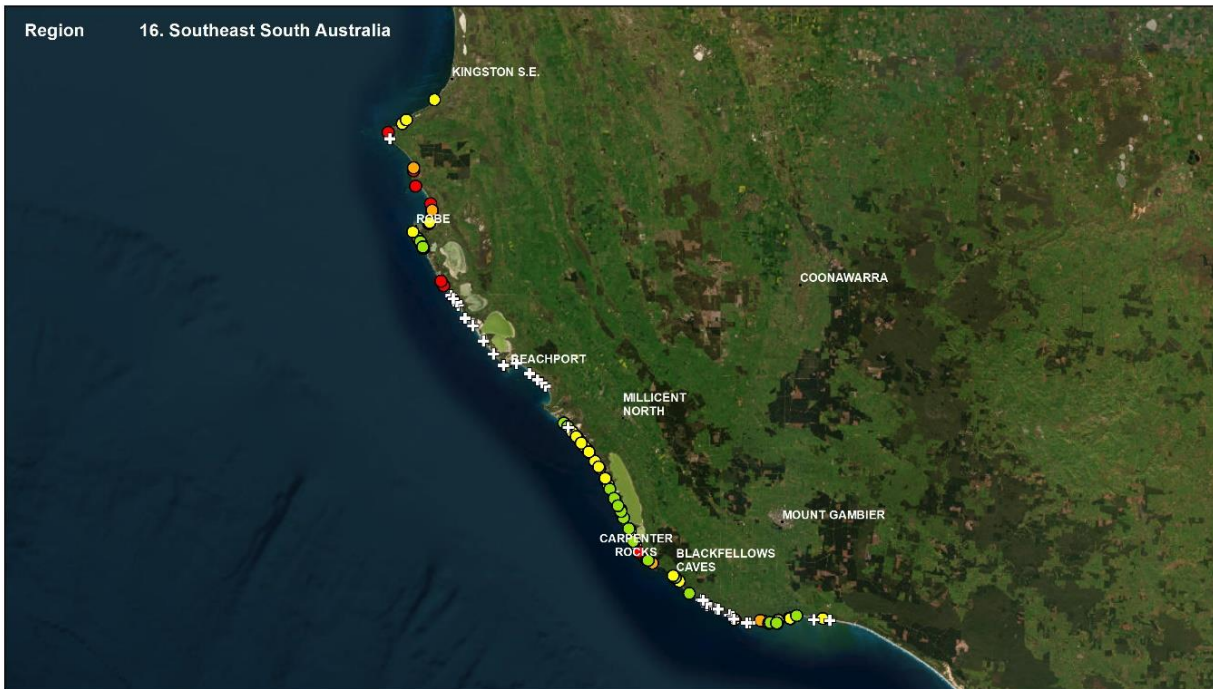
Hooded Plover Biennial Population Count 2022

Species distribution

- Hooded Plover
- Australian Pied Oystercatcher
- Red-capped Plover
- Sooty Oystercatcher



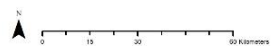
Service Layer Credits: Source: Esri, Maxar, Earthstar Geographics, and the GIS User Community



Hooded Plover Biennial Population Count 2022

Distribution of threats

- Very high
- High
- Medium
- Low
- Very low
- No data



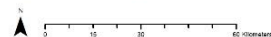
Service Layer Credits: Source: Esri, Maxar, Earthstar Geographics, and the GIS User Community



Hooded Plover Biennial Population Count 2022

Vegetation density

- Heavy
- Moderate
- Sparse
- No vegetation
- Not assessed



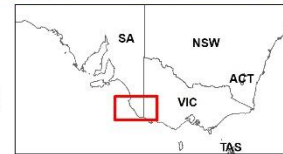
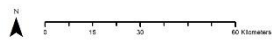
Service Layer Credits: Source: Esri, Maxar, Earthstar Geographics, and the GIS User Community



Hooded Plover Biennial Population Count 2022

Beach Daisy

- Present
- Absent
- ⊕ Not assessed



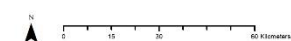
Service Layer Credits: Source: Esri, Maxar, Earthstar Geographics, and the GIS User Community



Hooded Plover Biennial Population Count 2022

Marram Grass

- Present
- Absent
- ⊕ Not assessed

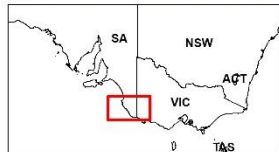
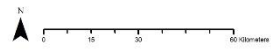


Service Layer Credits: Source: Esri, Maxar, Earthstar Geographics, and the GIS User Community



Hooded Plover Biennial Population Count 2022

Pyp Grass
 ● Present ● Absent ⊕ Not assessed

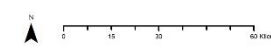


Service Layer Credits: Source: Esri, Maxar, Earthstar Geographics, and the GIS User Community



Hooded Plover Biennial Population Count 2022

Sea Spurge
 ● Present ● Absent ⊕ Not assessed



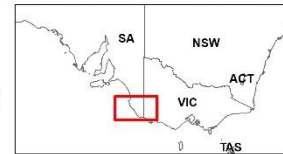
Service Layer Credits: Source: Esri, Maxar, Earthstar Geographics, and the GIS User Community



Hooded Plover Biennial Population Count 2022

Sea Wheat-grass

- Present
- Absent
- + Not assessed



Service Layer Credits: Source: Esri, Maxar, Earthstar Geographics, and the GIS User Community

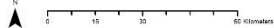
The Coorong



Hooded Plover Biennial Population Count 2022

Survey routes

- Surveyed
- Not surveyed



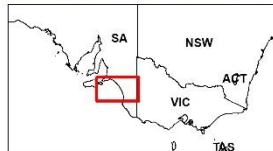
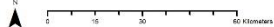
Service Layer Credits: Source: Esri, Maxar, Earthstar Geographics, and the GIS User Community



Hooded Plover Biennial Population Count 2022

Species distribution

- Hooded Plover
- Red-capped Plover
- Australian Pied Oystercatcher
- Sooty Oystercatcher



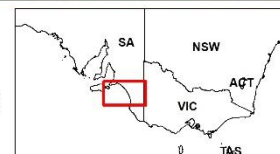
Service Layer Credits: Source: Esri, Maxar, Earthstar Geographics, and the GIS User Community



Hooded Plover Biennial Population Count 2022

Distribution of threats

- Very high
- Medium
- Very low
- High
- Low
- No data



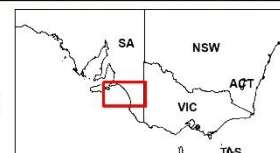
Service Layer Credits: Source: Esri, Maxar, Earthstar Geographics, and the GIS User Community



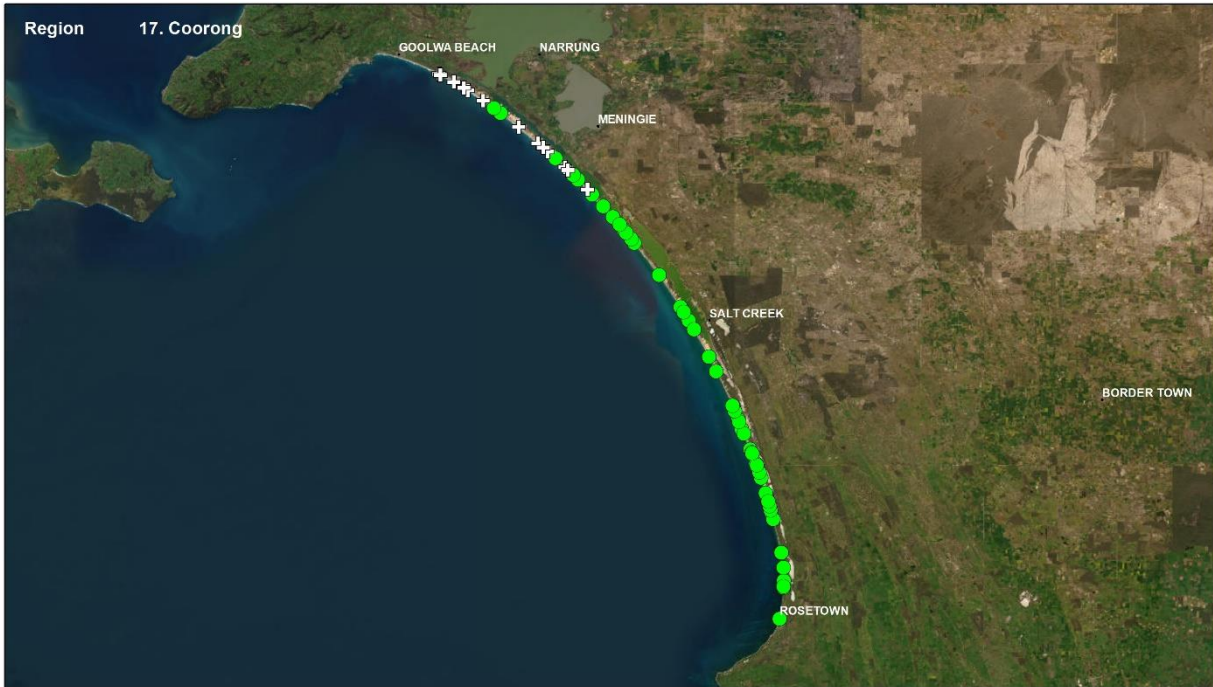
Hooded Plover Biennial Population Count 2022

Vegetation density

- Heavy
- Sparse
- Not assessed
- Moderate
- No vegetation



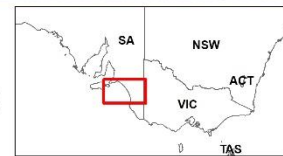
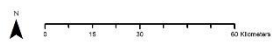
Service Layer Credits: Source: Esri, Maxar, Earthstar Geographics, and the GIS User Community



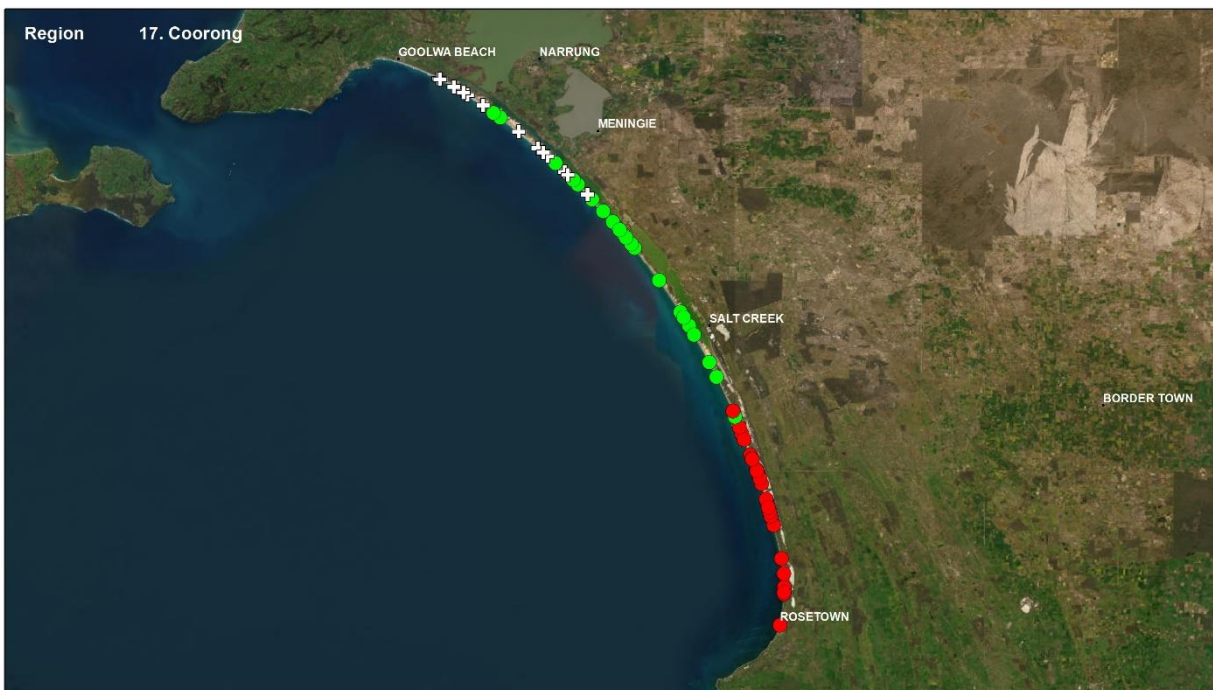
Hooded Plover Biennial Population Count 2022

Beach Daisy

- Present
- Absent
- ⊕ Not assessed



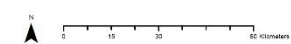
Service Layer Credits: Source: Esri, Maxar, Earthstar Geographics, and the GIS User Community



Hooded Plover Biennial Population Count 2022

Marram Grass

- Present
- Absent
- ⊕ Not assessed



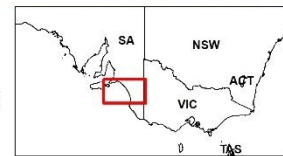
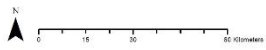
Service Layer Credits: Source: Esri, Maxar, Earthstar Geographics, and the GIS User Community



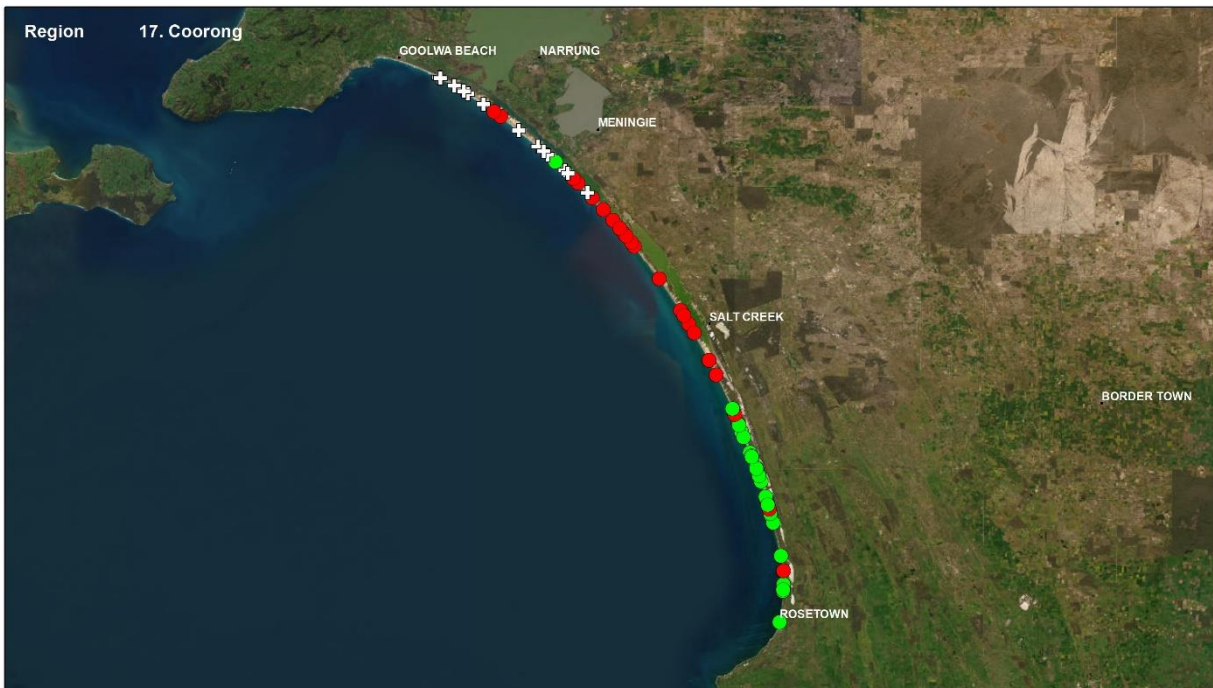
Hooded Plover Biennial Population Count 2022

Pyp Grass

- Present
- Absent
- ⊕ Not assessed



Service Layer Credits: Source: Esri, Maxar, Earthstar Geographics, and the GIS User Community



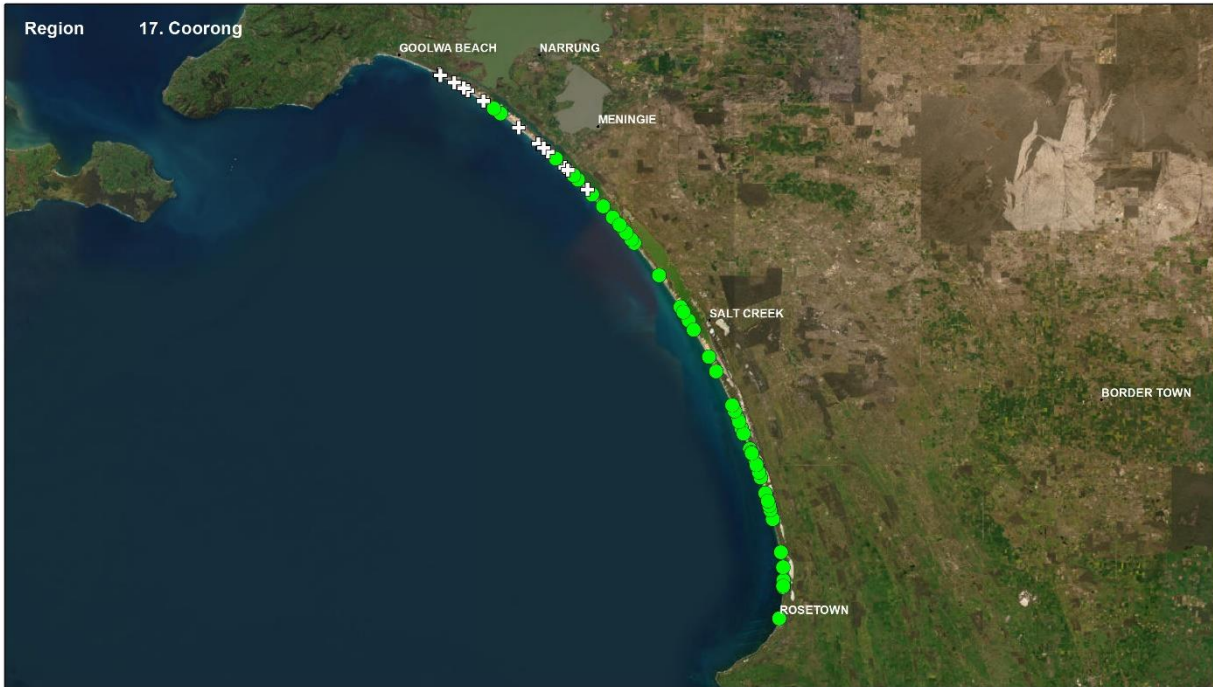
Hooded Plover Biennial Population Count 2022

Sea Spurge

- Present
- Absent
- ⊕ Not assessed



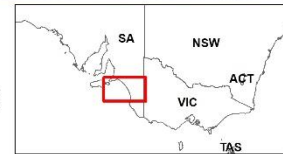
Service Layer Credits: Source: Esri, Maxar, Earthstar Geographics, and the GIS User Community



Hooded Plover Biennial Population Count 2022

Sea Wheat-grass

- Present
- Absent
- + Not assessed



Service Layer Credits: Source: Esri, Maxar, Earthstar Geographics, and the GIS User Community

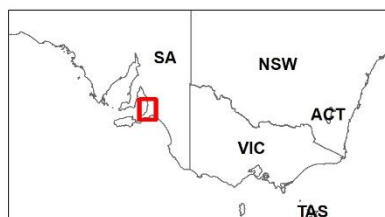
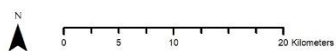
Fleurieu Peninsula



Hooded Plover Biennial Population Count 2022

Survey routes

- Surveyed
- Not surveyed



Service Layer Credits: Source: Esri, Maxar, Earthstar Geographics, and the GIS User Community



Hooded Plover Biennial Population Count 2022

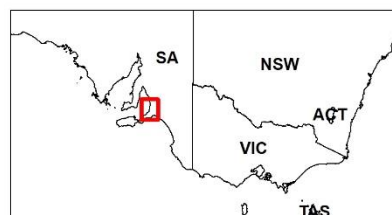
Species distribution

- Hooded Plover
- Red-capped Plover
- Australian Pied Oystercatcher
- Sooty Oystercatcher



0 5 10 20 Kilometers

Service Layer Credits: Source: Esri, Maxar, Earthstar Geographics, and the GIS User Community

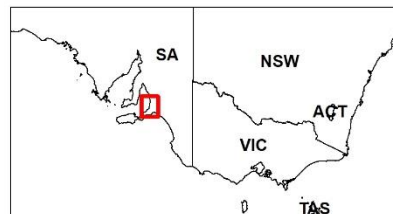




Hooded Plover Biennial Population Count 2022

Distribution of threats

- Very high
- High
- Medium
- Low
- Very low
- + No data



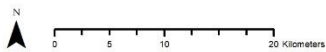
Service Layer Credits: Source: Esri, Maxar, Earthstar Geographics, and the GIS User Community



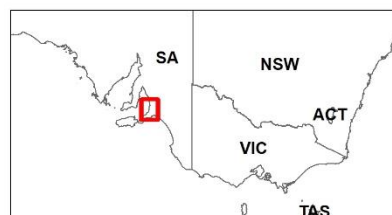
Hooded Plover Biennial Population Count 2022

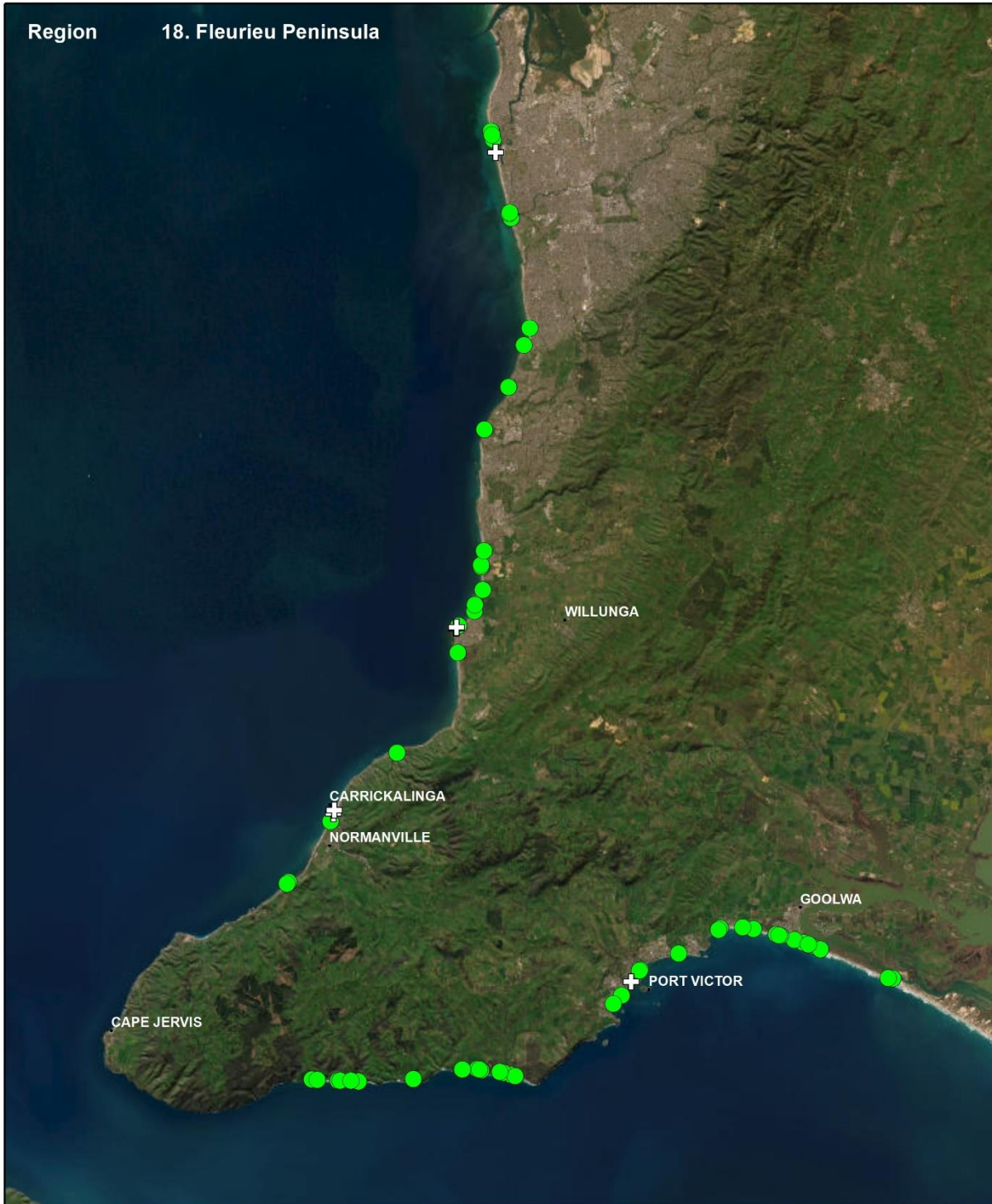
Vegetation density

- Heavy ● No vegetation
- Moderate + Not assessed
- Sparse



Service Layer Credits: Source: Esri, Maxar, Earthstar Geographics, and the GIS User Community

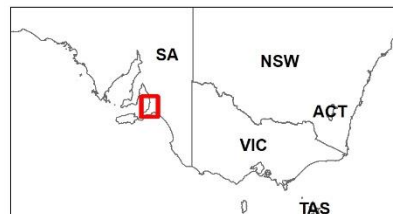
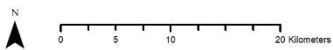




Hooded Plover Biennial Population Count 2022

Beach Daisy

- Present
- Absent
- + Not assessed



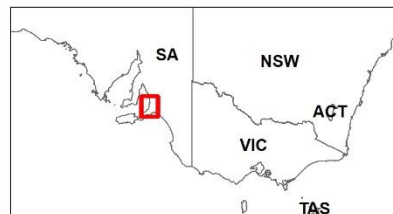
Service Layer Credits: Source: Esri, Maxar, Earthstar Geographics, and the GIS User Community



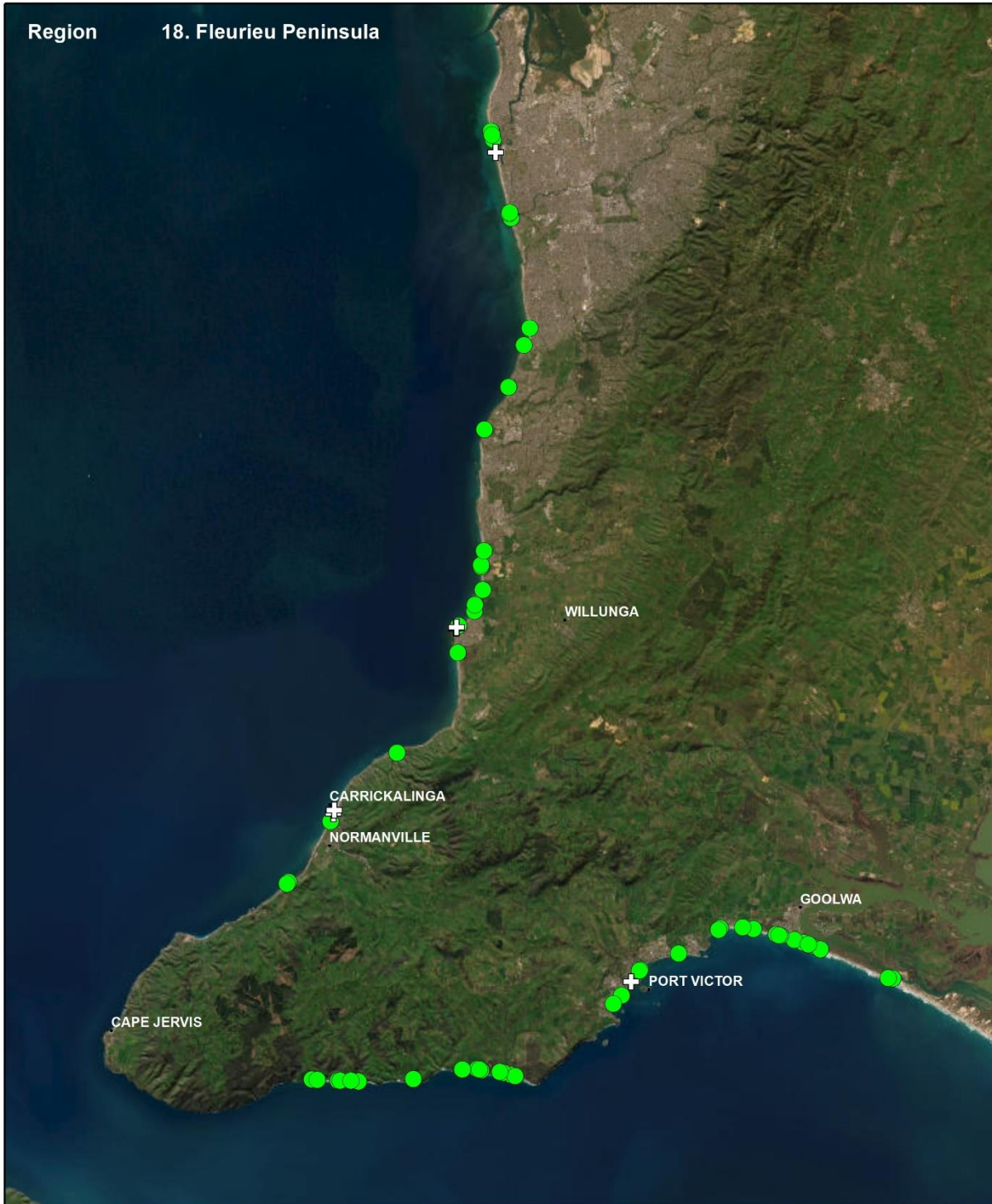
Hooded Plover Biennial Population Count 2022

Marram Grass

- Present
- Absent
- ⊕ Not assessed



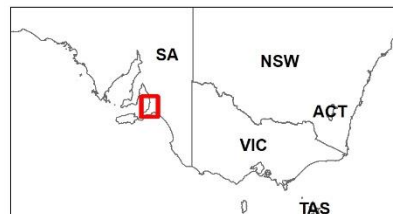
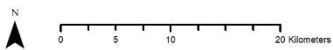
Service Layer Credits: Source: Esri, Maxar, Earthstar Geographics, and the GIS User Community



Hooded Plover Biennial Population Count 2022

Pyp Grass

- Present
- Absent
- + Not assessed



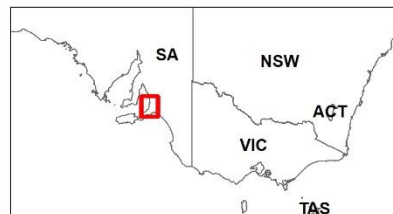
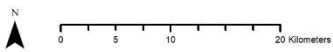
Service Layer Credits: Source: Esri, Maxar, Earthstar Geographics, and the GIS User Community



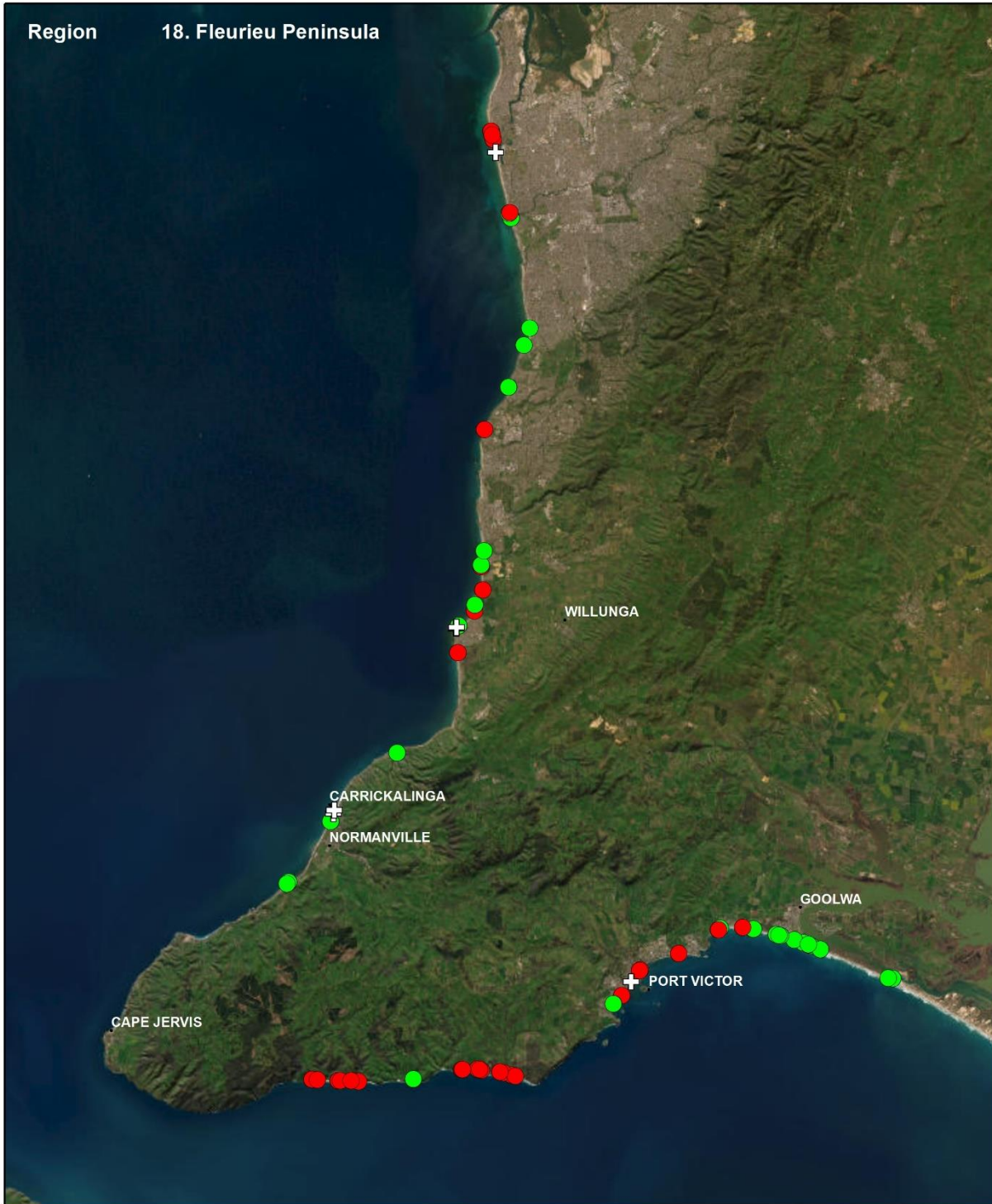
Hooded Plover Biennial Population Count 2022

Sea Spurge

- Present
- Absent
- + Not assessed



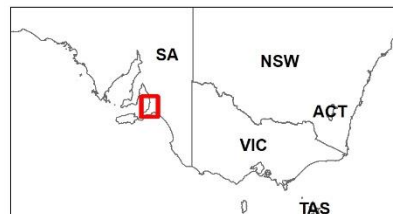
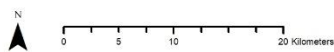
Service Layer Credits: Source: Esri, Maxar, Earthstar Geographics, and the GIS User Community



Hooded Plover Biennial Population Count 2022

Sea Wheat-grass

- Present
- Absent
- + Not assessed



Service Layer Credits: Source: Esri, Maxar, Earthstar Geographics, and the GIS User Community

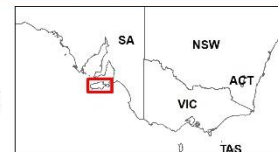
Kangaroo Island



Hooded Plover Biennial Population Count 2022

Survey routes

- Surveyed
- Not surveyed



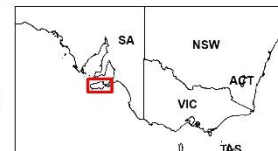
Service Layer Credits: Source: Esri, Maxar, Earthstar Geographics, and the GIS User Community



Hooded Plover Biennial Population Count 2022

Species distribution

- Hooded Plover
- Red-capped Plover
- Australian Pied Oystercatcher
- Sooty Oystercatcher



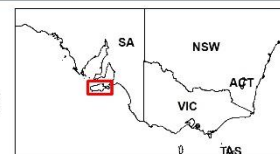
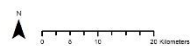
Service Layer Credits: Source: Esri, Maxar, Earthstar Geographics, and the GIS User Community



Hooded Plover Biennial Population Count 2022

Distribution of threats

- Very high
- High
- Medium
- Low
- Very low
- No data



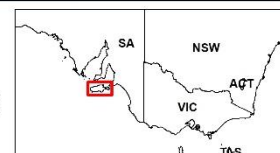
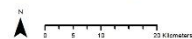
Service Layer Credits: Source: Esri, Maxar, Earthstar Geographics, and the GIS User Community



Hooded Plover Biennial Population Count 2022

Vegetation density

- Heavy
- Moderate
- Sparse
- No vegetation
- Not assessed



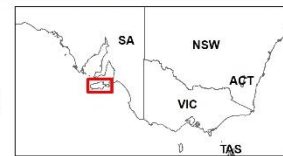
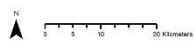
Service Layer Credits: Source: Esri, Maxar, Earthstar Geographics, and the GIS User Community



Hooded Plover Biennial Population Count 2022

Beach Daisy

- Present
- Absent
- + Not assessed



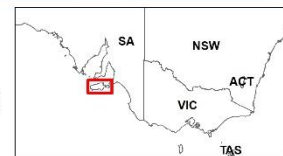
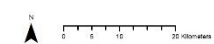
Service Layer Credits: Source: Esri, Maxar, Earthstar Geographics, and the GIS User Community



Hooded Plover Biennial Population Count 2022

Marram Grass

- Present
- Absent
- + Not assessed

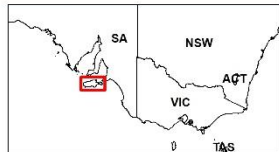
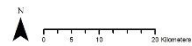


Service Layer Credits: Source: Esri, Maxar, Earthstar Geographics, and the GIS User Community



Hooded Plover Biennial Population Count 2022

Pyp Grass
 ● Present ● Absent ⊕ Not assessed



Service Layer Credits: Source: Esri, Maxar, Earthstar Geographics, and the GIS User Community



Hooded Plover Biennial Population Count 2022

Sea Spurge
 ● Present ● Absent ⊕ Not assessed



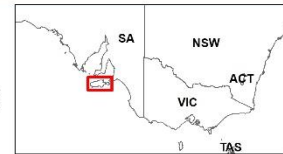
Service Layer Credits: Source: Esri, Maxar, Earthstar Geographics, and the GIS User Community



Hooded Plover Biennial Population Count 2022

Sea Wheat-grass

- Present
- Absent
- + Not assessed



Service Layer Credits: Source: Esri, Maxar, Earthstar Geographics, and the GIS User Community

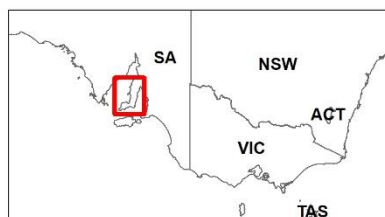
Yorke Peninsula



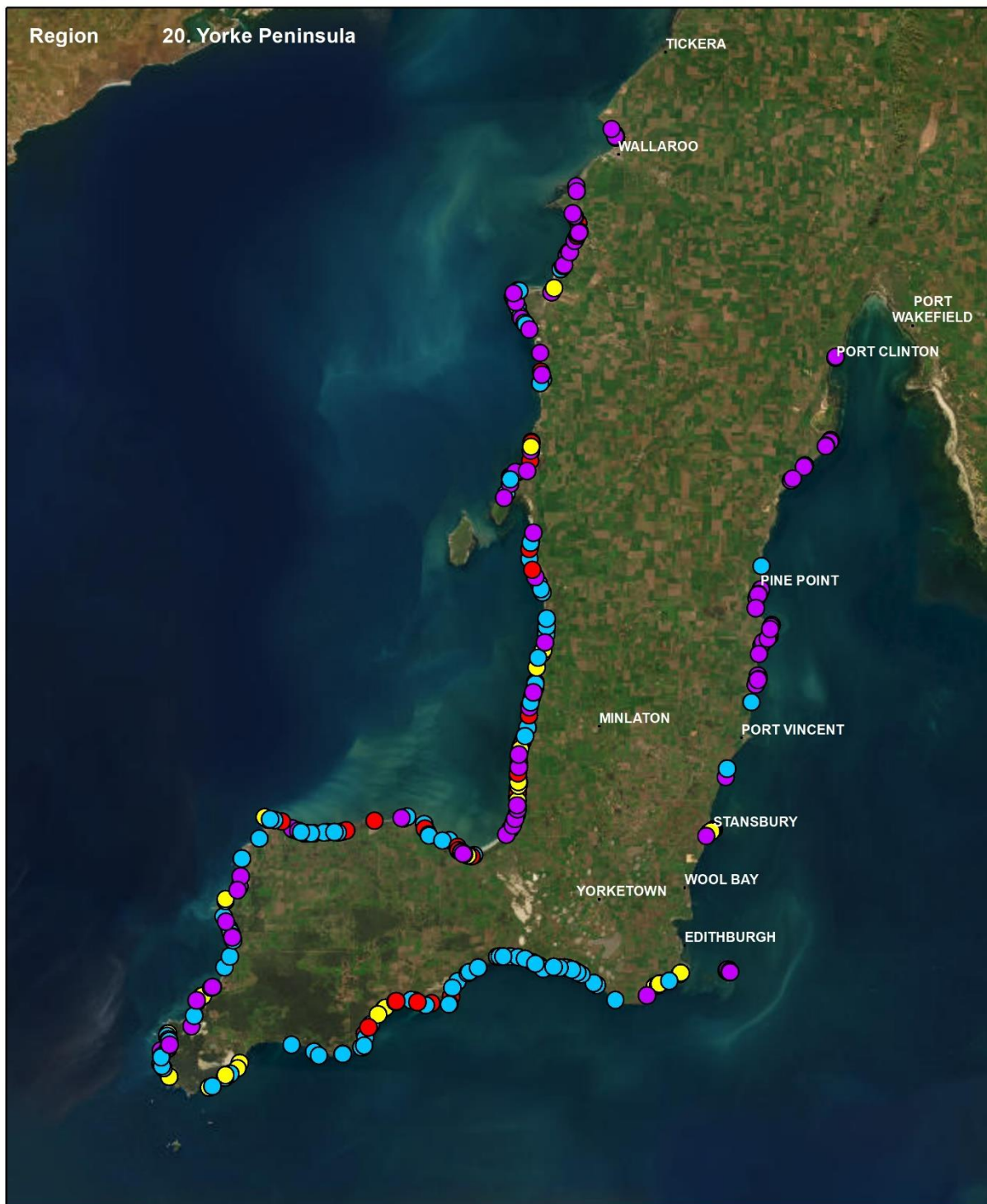
Hooded Plover Biennial Population Count 2022

Survey routes

- Surveyed
- Not surveyed



Service Layer Credits: Source: Esri, Maxar, Earthstar Geographics, and the GIS User Community



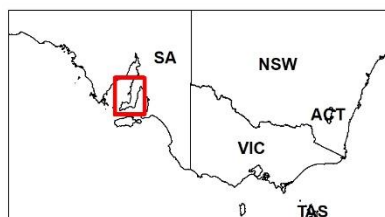
Hooded Plover Biennial Population Count 2022

Species distribution

- Hooded Plover
- Red-capped Plover
- Australian Pied Oystercatcher
- Sooty Oystercatcher



Service Layer Credits: Source: Esri, Maxar, Earthstar Geographics, and the GIS User Community

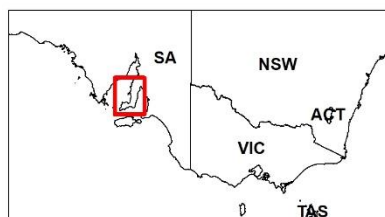
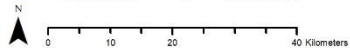




Hooded Plover Biennial Population Count 2022

Distribution of threats

- Very high Low
- High Very low
- Medium + No data



Service Layer Credits: Source: Esri, Maxar, Earthstar Geographics, and the GIS User Community



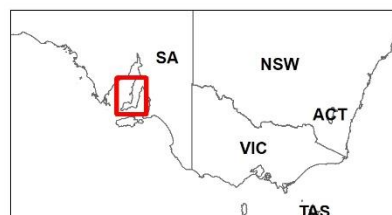
Hooded Plover Biennial Population Count 2022

Vegetation density

- Heavy
- Moderate
- Sparse
- No vegetation
- + Not assessed



Service Layer Credits: Source: Esri, Maxar, Earthstar Geographics, and the GIS User Community

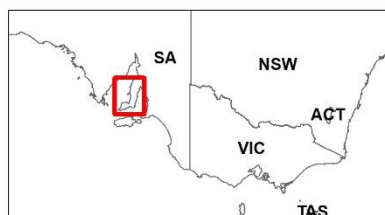
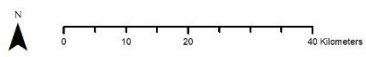




Hooded Plover Biennial Population Count 2022

Beach Daisy

- Present
- Absent
- + Not assessed



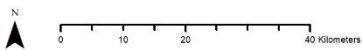
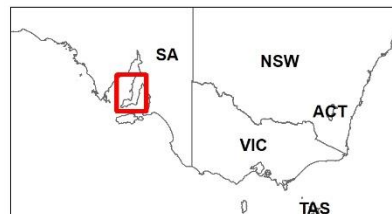
Service Layer Credits: Source: Esri, Maxar, Earthstar Geographics, and the GIS User Community



Hooded Plover Biennial Population Count 2022

Marram Grass

- Present
- Absent
- ⊕ Not assessed



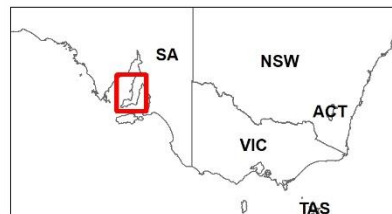
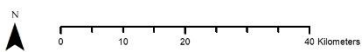
Service Layer Credits: Source: Esri, Maxar, Earthstar Geographics, and the GIS User Community



Hooded Plover Biennial Population Count 2022

Pyp Grass

- Present
- Absent
- + Not assessed

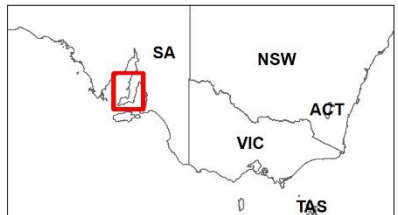


Service Layer Credits: Source: Esri, Maxar, Earthstar Geographics, and the GIS User Community



Hooded Plover Biennial Population Count 2022

Sea Spurge
 ● Present ● Absent + Not assessed



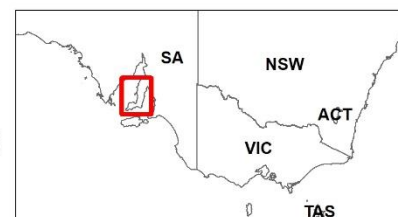
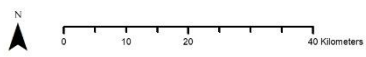
Service Layer Credits: Source: Esri, Maxar, Earthstar Geographics, and the GIS User Community



Hooded Plover Biennial Population Count 2022

Sea Wheat-grass

- Present
- Absent
- + Not assessed



Service Layer Credits: Source: Esri, Maxar, Earthstar Geographics, and the GIS User Community

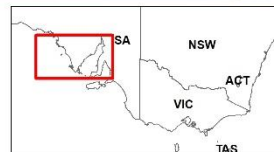
Eyre Peninsula



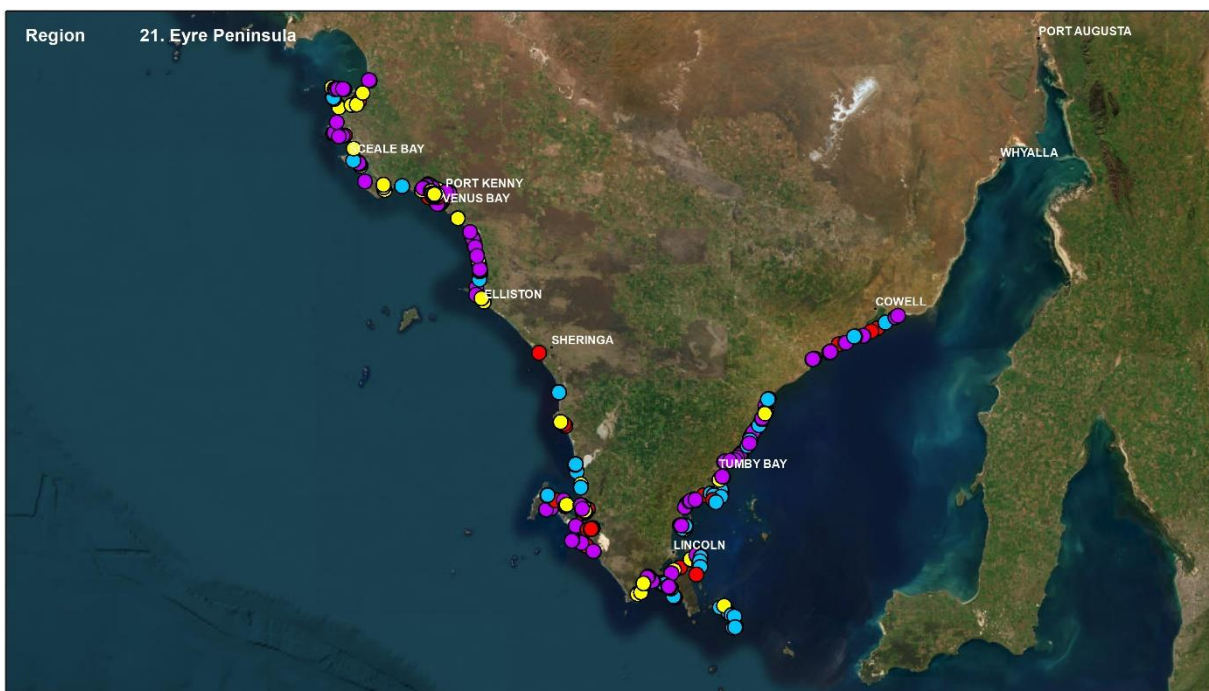
Hooded Plover Biennial Population Count 2022

Survey routes

- Surveyed
- Not surveyed



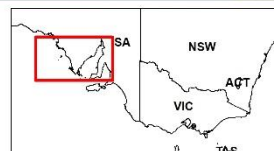
Service Layer Credits: Source: Esri, Maxar, Earthstar Geographics, and the GIS User Community



Hooded Plover Biennial Population Count 2022

Species distribution

- Hooded Plover
- Red-capped Plover
- Australian Pied Oystercatcher
- Sooty Oystercatcher



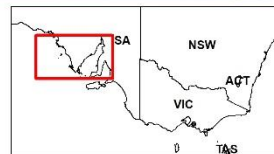
Service Layer Credits: Source: Esri, Maxar, Earthstar Geographics, and the GIS User Community



Hooded Plover Biennial Population Count 2022

Distribution of threats

- Very high (purple circle)
- High (red circle)
- Medium (orange circle)
- Low (yellow circle)
- Very low (green circle)
- No data (cross symbol)



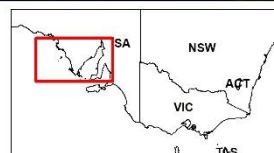
Service Layer Credits: Source: Esri, Maxar, Earthstar Geographics, and the GIS User Community



Hooded Plover Biennial Population Count 2022

Vegetation density

- Heavy (red circle)
- Moderate (orange circle)
- Sparse (yellow circle)
- No vegetation (green circle)
- Not assessed (cross symbol)



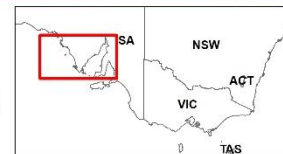
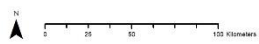
Service Layer Credits: Source: Esri, Maxar, Earthstar Geographics, and the GIS User Community



Hooded Plover Biennial Population Count 2022

Beach Daisy

- Present
- Absent
- + Not assessed



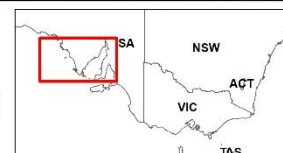
Service Layer Credits: Source: Esri, Maxar, Earthstar Geographics, and the GIS User Community



Hooded Plover Biennial Population Count 2022

Marram Grass

- Present
- Absent
- + Not assessed



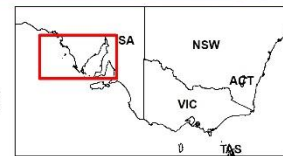
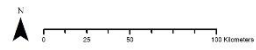
Service Layer Credits: Source: Esri, Maxar, Earthstar Geographics, and the GIS User Community



Hooded Plover Biennial Population Count 2022

Pyp Grass

- Present
- Absent
- ⊕ Not assessed



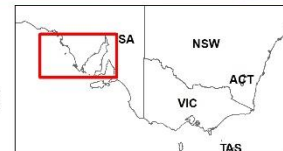
Service Layer Credits: Source: Esri, Maxar, Earthstar Geographics, and the GIS User Community



Hooded Plover Biennial Population Count 2022

Sea Spurge

- Present
- Absent
- ⊕ Not assessed



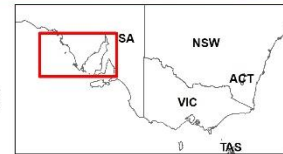
Service Layer Credits: Source: Esri, Maxar, Earthstar Geographics, and the GIS User Community



Hooded Plover Biennial Population Count 2022

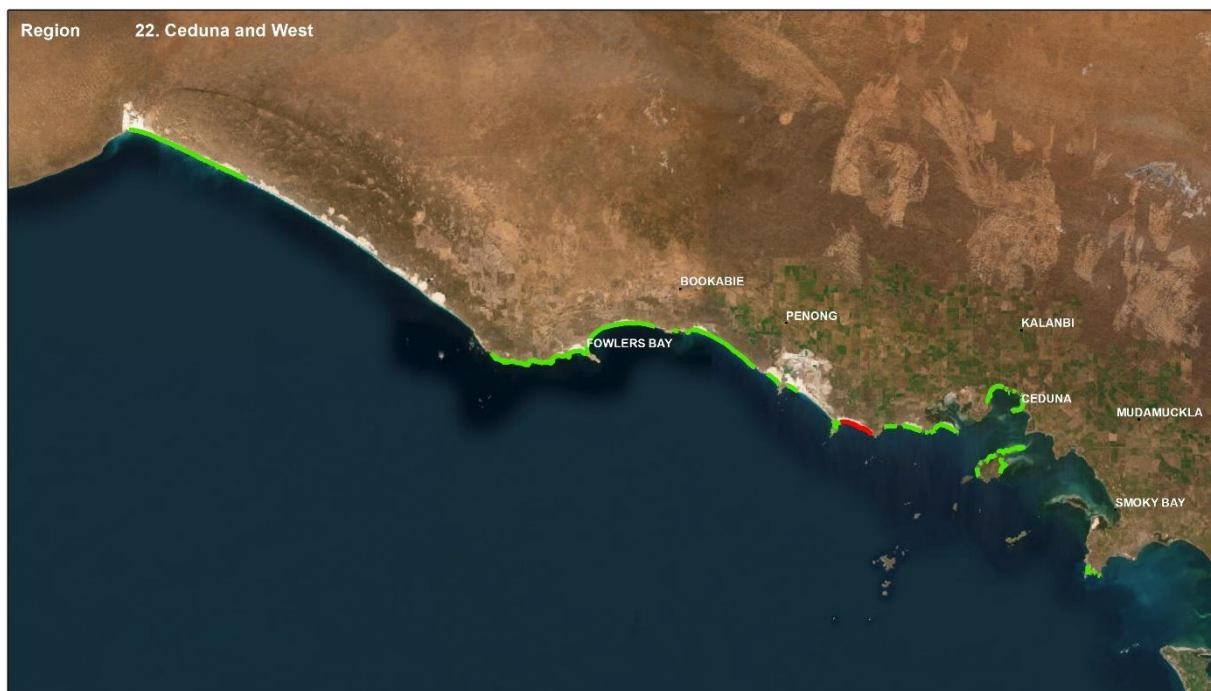
Sea Wheat-grass

- Present
- Absent
- + Not assessed



Service Layer Credits: Source: Esri, Maxar, Earthstar Geographics, and the GIS User Community

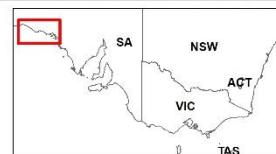
Ceduna and West



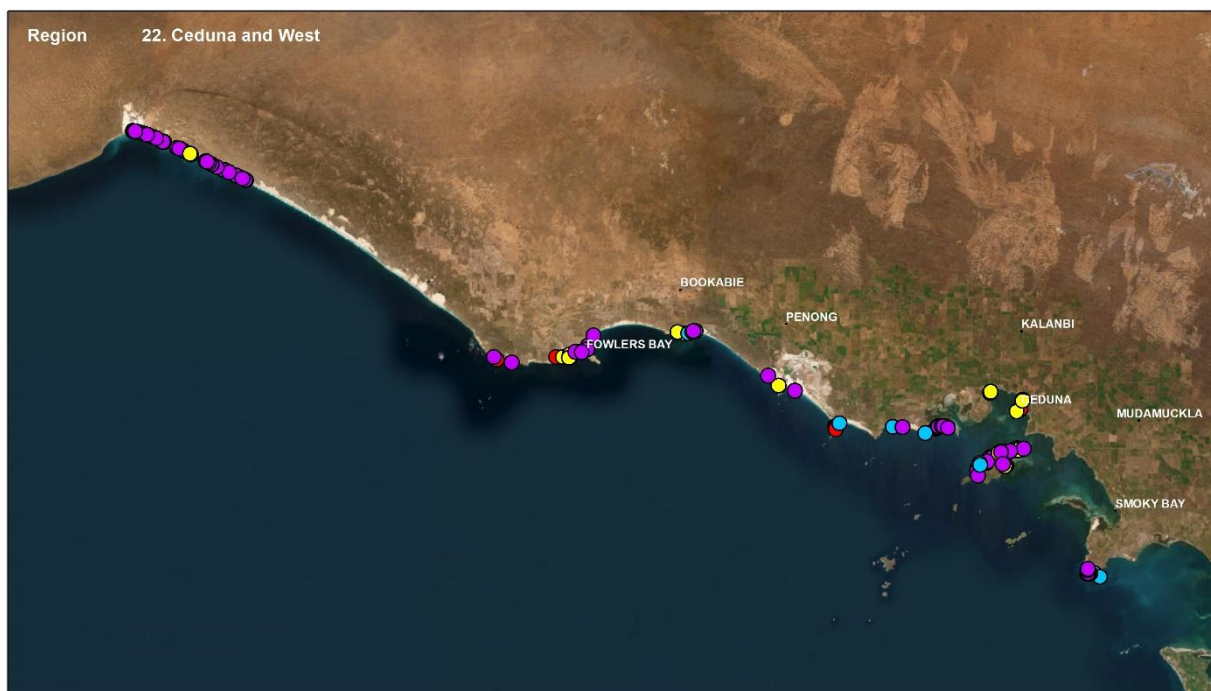
Hooded Plover Biennial Population Count 2022

Survey routes

- Surveyed
- Not surveyed



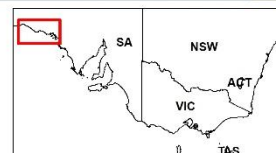
Service Layer Credits: Source: Esri, Maxar, Earthstar Geographics, and the GIS User Community



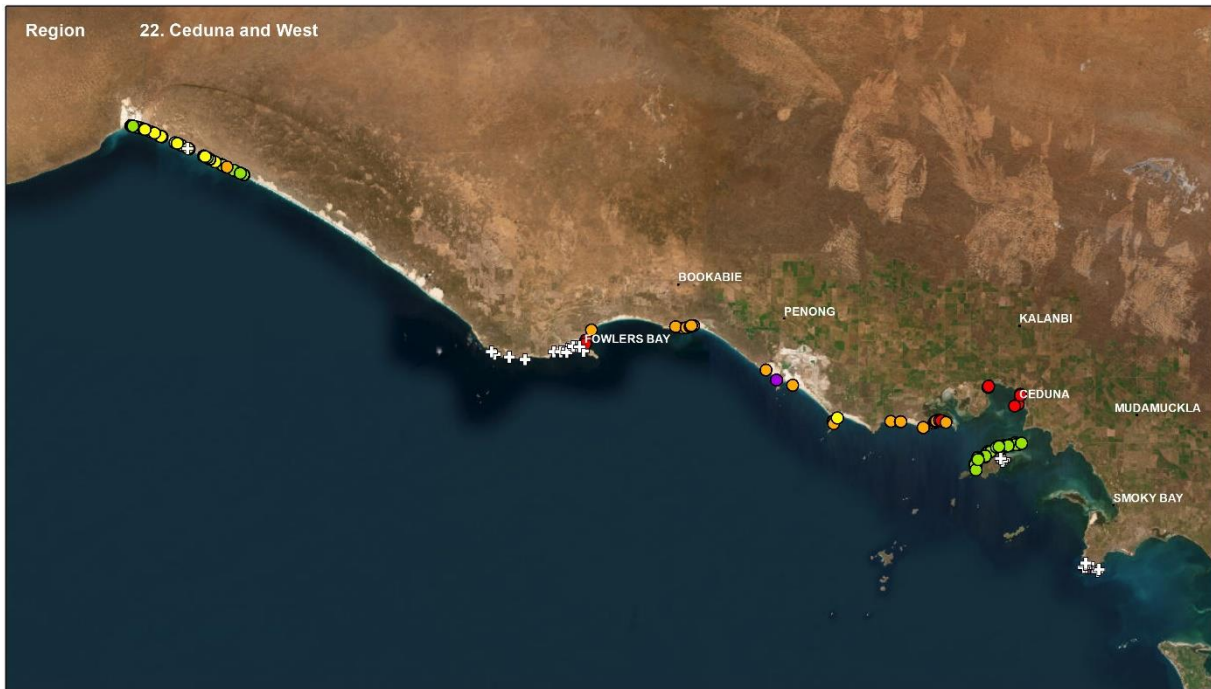
Hooded Plover Biennial Population Count 2022

Species distribution

- Hooded Plover
- Red-capped Plover
- Sooty Oystercatcher
- Australian Pied Oystercatcher



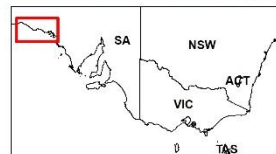
Service Layer Credits: Source: Esri, Maxar, Earthstar Geographics, and the GIS User Community



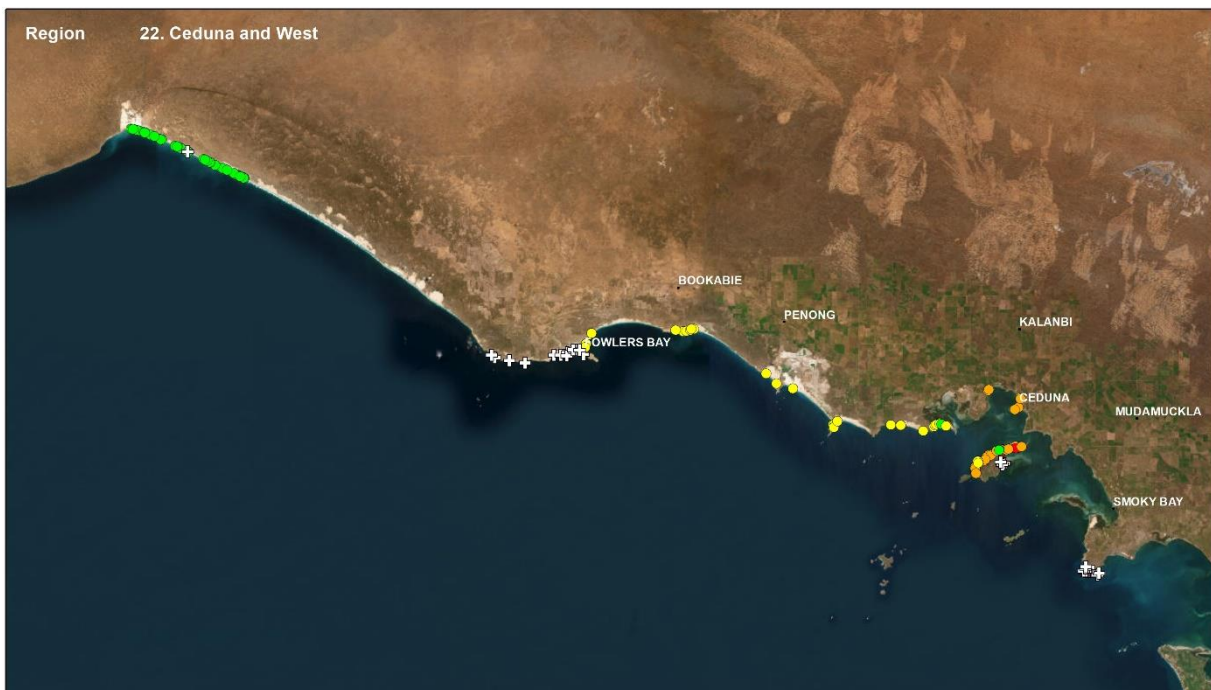
Hooded Plover Biennial Population Count 2022

Distribution of threats

- Very high
- High
- Medium
- Low
- Very low
- No data



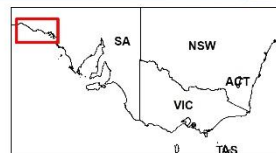
Service Layer Credits: Source: Esri, Maxar, Earthstar Geographics, and the GIS User Community



Hooded Plover Biennial Population Count 2022

Vegetation density

- Heavy
- Moderate
- Sparse
- No vegetation
- Not assessed



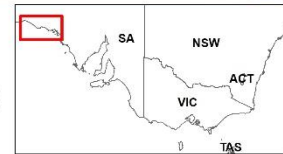
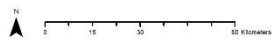
Service Layer Credits: Source: Esri, Maxar, Earthstar Geographics, and the GIS User Community



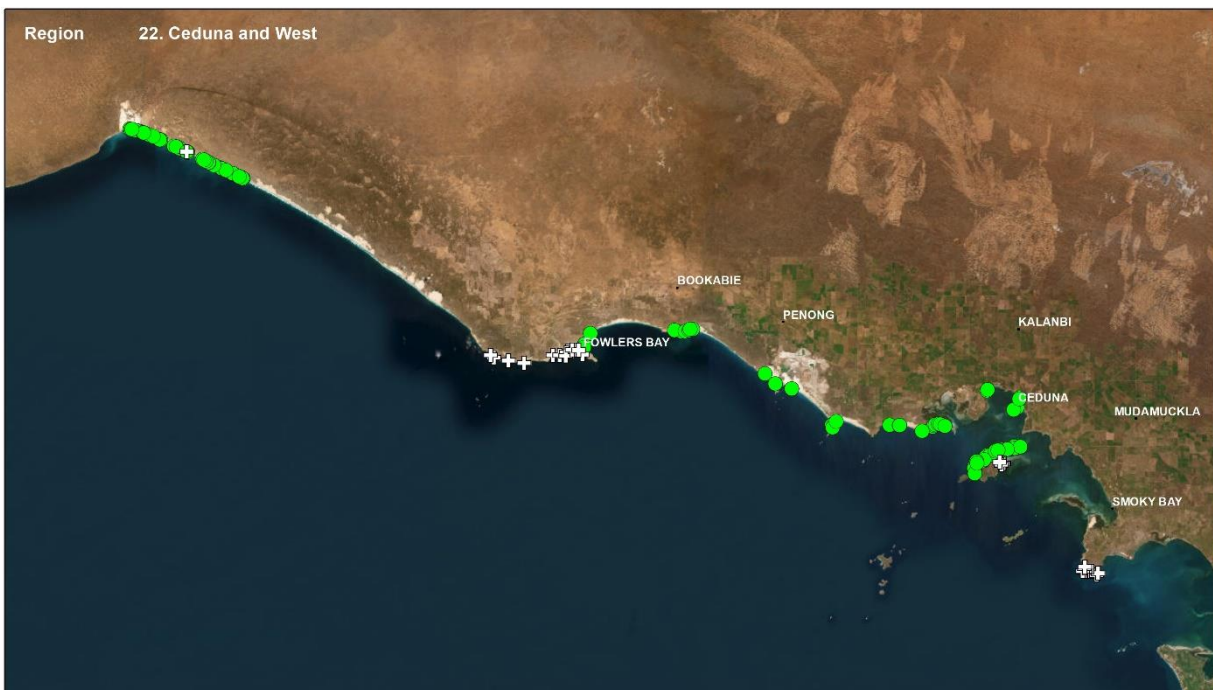
Hooded Plover Biennial Population Count 2022

Beach Daisy

- Present
- Absent
- ⊕ Not assessed



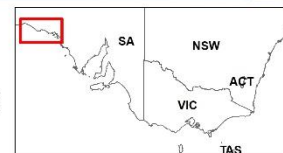
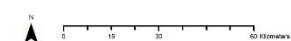
Service Layer Credits: Source: Esri, Maxar, Earthstar Geographics, and the GIS User Community



Hooded Plover Biennial Population Count 2022

Marram Grass

- Present
- Absent
- ⊕ Not assessed



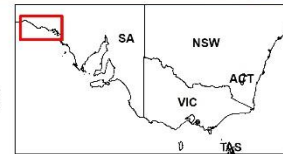
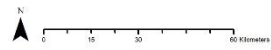
Service Layer Credits: Source: Esri, Maxar, Earthstar Geographics, and the GIS User Community



Hooded Plover Biennial Population Count 2022

Pyp Grass

- Present
- Absent
- + Not assessed



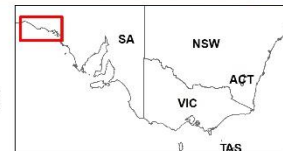
Service Layer Credits: Source: Esri, Maxar, Earthstar Geographics, and the GIS User Community



Hooded Plover Biennial Population Count 2022

Sea Spurge

- Present
- Absent
- + Not assessed



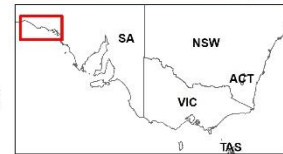
Service Layer Credits: Source: Esri, Maxar, Earthstar Geographics, and the GIS User Community



Hooded Plover Biennial Population Count 2022

Sea Wheat-grass

- Present
- Absent
- ⊕ Not assessed



Service Layer Credits: Source: Esri, Maxar, Earthstar Geographics, and the GIS User Community



Suite 2-05
60 Leicester Street
Carlton VIC 3053
1300 730 075
birdlife.org.au

Thank you

Kasun Ekanayake
Beach-nesting Birds Project Coordinator
kasun.ekanayake@birdlife.org.au

